

NOTICE OF RACE

SNIPE CLASS INTERNATIONAL RACING ASSOCIATION

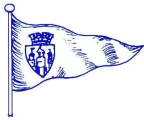
Women's European Championship 2026

14th of August – 18th of August

ORGANIZING AUTHORITY:

Tønsberg Seilforening and Norwegian Sailing
Federation in co-operation with the Snipe Class
International Racing Association (SCIRA)





The Notation [NP] denotes a rule that shall not be grounds for protests by a boat. This change RRS 60.1.

The Notation [DP] in a *rule* means that the penalty for a breach of the *rule* may, at the discretion of the protest committee, be less than disqualification.

1 RULES

The regatta will be governed by:

- 1.1 The rules as defined in the *Racing Rules of Sailing*. (RRS)
- 1.2 The SCIRA *Rules of Conduct for Conducting National and International Championship Regattas (RoC)* available at [Rules Of Conduct for Conducting National and International Championship Regattas](#).
- 1.3 [Deed of Gift Women's European Championship](#).
- 1.4 The RRS 30.4, 32.1, 32.2, 33, 35, 60.5(c), 61.4(b)(1) 61.4(c), A4 and A5 are changed, as specified in the Sailing Instructions according with SCIRA Rules of Conduct for Conducting National and International Championship Regattas (RoC).
- 1.5 [NP][DP] No drones are allowed closer than 500 m from racing areas from the Warning Signal for a race and after the last boat has finished the last race of the day. This does not apply to Organizing Authority drones.
- 1.6 RRS Appendix T will apply.
- 1.7 RRS Appendix P will apply.
- 1.8 Rule 40.1 Personal Flotation Device applies at all times while afloat.
- 1.9 If there is a conflict between languages the English will take precedence.
- 1.10 If there is a conflict between the NOR or the SIs, the SIs will take precedence. This change RRS 63.5(c).
- 1.11 Nordic Sailing Federation and Norwegian Sailing Federations prescriptions to the RRS 2025 – 2028. See Attachment 2.

2 SAILING INSTRUCTIONS

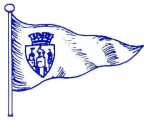
- 2.1 The sailing instructions will be available electronically after 12.00 on August 13 at [Manage2Sail](#).

3 COMMUNICATION

- 3.1 The online official notice board is located at [Manage2Sail](#).
- 3.2 Except in an emergency or when using equipment provided by the race committee, a boat that is racing shall not make voice or data transmissions and shall not receive voice or data communication that is not available to all boats.

4 ELIGIBILITY AND ENTRY

- 4.1 This regatta is open to SCIRA registered boats for the current year, subject to any Deed of Gift restrictions.
- 4.2 Eligible boats may enter by completing online registration at [Manage2Sail](#) no later than June 26 2026. Entries may be accepted after this date only with approval by the OA on a case-by-case basis.
- 4.3 Only boats that have completed all registration requirements will be allowed to compete. Note – completed registration includes payment of entry fee.



- 4.4 No crew shall be eligible to enter any Class championship race unless shows as a member in the SCIRA Official Online Database.
- 4.5 A helmsperson shall be designated in the entry form.
- 4.6 The designated helmsperson must be at the helm while racing except in the event of an emergency involving the safety of the boat or crew.

5 FEES

- 5.1 Entry fees include social events for skipper and crew.
- 5.2 Entry fee until June 26th 2026 is €350.
- 5.3 Entry fee June 27th to August 10th 2026 is €450.
- 5.4 Late entry may be accepted by the OA until August 10th 2026 with a surcharge of € 100.
- 5.5 All payments shall be made with [Manage2Sail](#).

6. SCHEDULE

6.1 Schedule

Friday	14 th August	08.00-17.00	Registration/Check-in and Measurement	
Saturday	15 th August	08.00-17.00	Registration/Check-in and Measurement	
		15.00	Practice Race	
		17.00	Opening Ceremony	
Sunday	16 th August	11.00	Warning Signal	2 races scheduled
Monday	17 th August	11.00	Warning Signal	2 races scheduled
Tuesday	18 th August	11.00	Warning Signal	2 races scheduled

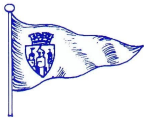
- 6.2 Six (6) races are scheduled.
- 6.3 On the last day of racing no warning signal will be made after 15.00.
- 6.4 When the entrants exceed 80 boats, the fleet may be split, and the regatta will consist of a qualifying series and a final series.

7 EQUIPMENT INSPECTION

- 7.1 [DP] Initial Equipment Inspection: All boats and personal equipment shall be presented for inspection including sails and personal flotation devices during the scheduled inspection. Boats shall be presented in a dry, clean, and salt-free condition. The Technical Committee or Race Committee may extend the Initial Equipment Inspection time.
- 7.2 [NP][DP] The measurement certificate shall be presented during the initial equipment inspection. This Changes RRS 78.2.
- 7.3 A boat or equipment may be inspected at any time for compliance with the class rules, notice of race and sailing instructions.
- 7.4 [NP][DP] When instructed by a race official on the water, a boat shall proceed to a designated area for inspection.

8 ADVERTISING

- 8.1 [NP][SP] Boats may be required to display advertising chosen and supplied by the organizing authority.



9 VENUE

9.1 Races will be sailed in Oslo Fjord east of Nøtterøy. See attachment 1.

10 COURSES

10.1 The courses to be sailed are the Class approved courses as published in the SCIRA [web site](#).

11 SCORING

11.1 Three (3) races are required to be completed to constitute a series.

11.2 (a) When fewer than five (5) races have been completed, a boat's series score will be the total of her race scores.

(b) When from five (5) to six (6) races have been completed, a boat's series score will be the total of her race scores excluding her worst score. This changes RRS A2.1

12 SUPPORT PERSON VESSELS

12.1 Between the preparatory signal and the starting signal, Support Vessels must be positioned at least 50 meters below the starting line. After the starting signal Support Vessels may follow the fleet, but only on the starboard side of the course and must stay 50 meters from any mark or any boat racing.

12.2 Each support vessel shall have a working VHF radio and monitor the radio, an anchor suitable for anchoring in the waiting area, keycord, and a basic first aid kit. The water depth in the race area can be 40 meters.

12.3 Support Persons shall register at the Regatta Office including the competitors related to him/her and all support vessels shall be identified [Manage2Sail](#).

12.4 Minors

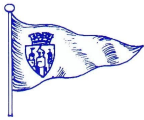
12.4.1 All coaches, parents, guardians and 'designated adults' are support persons (See RRS definition *Support person*).

12.4.2 In addition to the requirements of RRS 3 Decision to Race, an adult (parent, guardian or designated adult) is responsible for the safety of their competitor. It is the responsibility of this adult to decide if their competitor should sail in the weather and sea conditions that might arise during the event. The adults supervising the competitors are ultimately responsible for the risks.

12.4.3 Parents not personally attending any part of the event shall ensure that another adult is authorized and designated to make these decisions for their sailor.

12.4.4 Each competitor shall indicate in writing at Registration the parent or adult representative that will be responsible for the competitor throughout the event.

12.4.5 The designated adult shall accept full responsibility for all actions of the competitor during any activity related to the event. This includes on shore activities before, during, and after the races.



13 DATA PROTECTION AND RIGHTS TO USE NAME AND LIKENESS

13.1 By participating in this event, competitors automatically grant to SCIRA, the organizing authority and the event sponsors the right, in perpetuity, to make, use, and show, at their discretion, any photography, audio and video recording, and other reproductions of them made at the venue or on the water from the time of their arrival at the venue, until their final departure, without compensation.

14 RISK STATEMENT

14.1 Competitors participate in the event entirely at their own risk. See RRS 3, Decision to Race. The OA will not accept any liability for material damage or personal injury, or death sustained in conjunction with or prior to, during, or after the regatta.

14.2 Sailing is by its nature an unpredictable sport and therefore inherently involves an element of risk. By taking part in the event, each competitor and the responsible adult agree and acknowledges that:

- a) They are aware of the inherent element of risk involved in the sport and accept responsibility for the exposure of themselves and their boat to such inherent risk whilst taking part in the event.
- b) They are responsible for the safety of themselves, their boat and their other property whether afloat or ashore.
- c) They accept responsibility for any injury, damage or loss to the extent caused by their own actions or omission.
- d) Their boat is in good order, equipped to sail in the event and they are fit to participate.
- e) The provision of a race management team, patrol boats and other officials and volunteers by the event organizer does not relieve them of their own responsibilities.
- f) The provision of patrol boat cover is limited to such assistance, particularly in extreme weather conditions, as can be practically provided in the circumstances.

15 INSURANCE

15.1 Each participating boat shall be insured with valid third-party liability insurance with a minimum cover of EURO 300.000,00 per incident or the equivalent.

15.2 The completed form and proof of payment must be presented at registration.

16 PRIZES

16.1 Prizes will be awarded to the top 3 boat overall.

16.2 The European Championship Trophy will be awarded to the Winning skipper and crew.

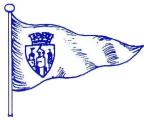
17 FURTHER INFORMATION

17.1 For further information please contact:

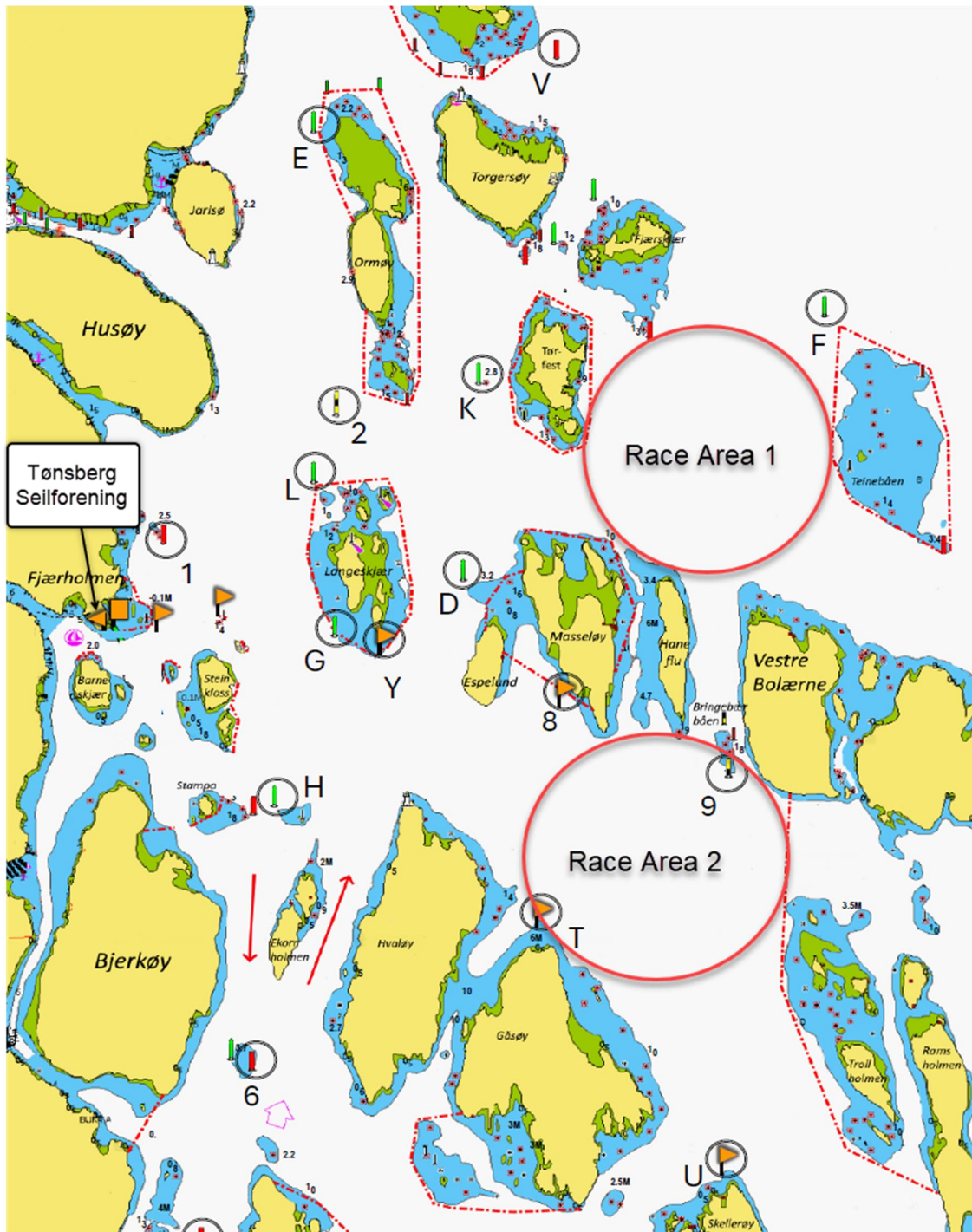
Tønsberg Seilforening, Fjærholmen 192, 3132 Husøysund, Norway

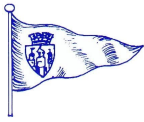
de@tonsbergseilforening.no

tonsbergseilforening.no.



Attachment 1





Attachment 2

Nordic Sailing Federation and Norwegian Sailing Federations prescriptions to the RRS 2025 – 2028

NordicSF Prescription - Rules 30.2, 30.3 and 30.4:

When rule 30.2, 30.3 or 30.4 applies, and the starting vessel is not a starting mark but is positioned on the extension of the starting line, the base of the triangle mentioned in these rules runs from the starting vessel along the extension and the starting line to the starting mark at the opposite end of the starting line.

NordicSF Prescription - Rule 63.3(c):

Rule 63.3(c) does not apply at the following events held in NSF: international events, national championships, national selections for international events and national ranking list events. A person who has any conflict of interest shall not be a member of the protest committee at any of these events.

NordicSF Prescription - Rule 70.3:

Denial of appeal in accordance with rule 70.3(a) requires approval from NSF. The request for approval must be received by the national authority no later than 8 weeks before the event

NordicSF Prescription - Rule 86.3:

The restrictions in rule 86.1 do not apply if rules are changed to develop or test proposed rules. Any such change requires approval by NSF. The request for approval must be received by the national authority no later than 8 weeks before the event.

NordicSF Prescription - Rule 88.2:

The notice of race and the sailing instructions shall not change or delete Norwegian Sailing Federation or NordicSF prescriptions to the following rules: 63.4, 70.5, 75.2, 86.3 and 89.1.

NSF Prescription - Rule 89.1:

The organizing authority of an international championship for a WS class must obtain approval from NSF. The request for approval must be received by the national authority no later than 6 months before the event.